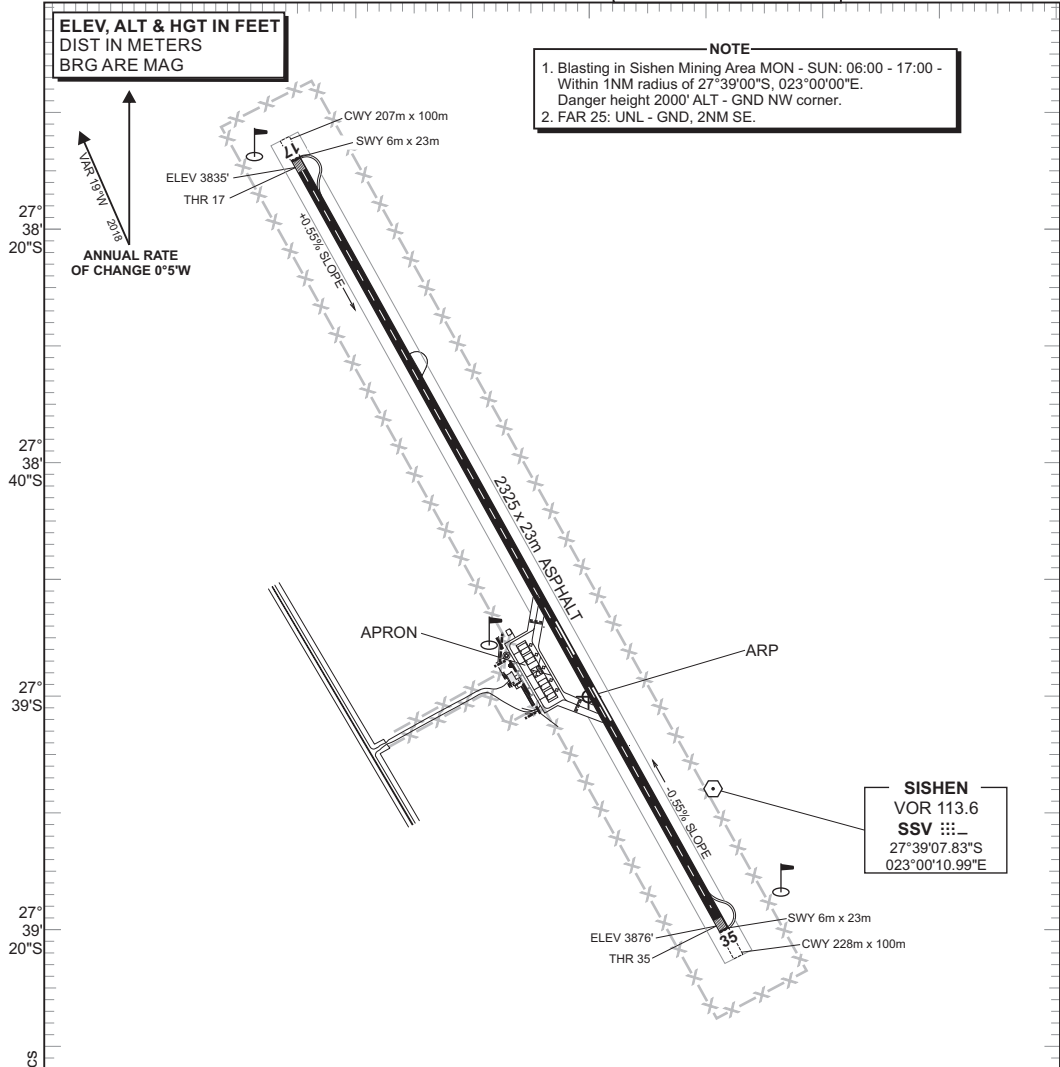


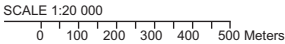
**ELEV, ALT & HGT IN FEET
DIST IN METERS
BRG ARE MAG**

NOTE

1. Blasting in Sishen Mining Area MON - SUN: 06:00 - 17:00 - Within 1NM radius of 27°39'00"S, 023°00'00"E. Danger height 2000' ALT - GND NW corner.
2. FAR 25: UNL - GND, 2NM SE.



SISHEN
VOR 113.6
SSV :::-
27°39'07.83"S
023°00'10.99"E



RWY LIGHTING					
RWY	ALS	PAPI	RTHL	REDL	RENL
17	NIL	NIL	GREEN	WHITE	RED
35	NIL	NIL	GREEN	WHITE	RED

OTHER: WDI, APRON, VOR & NDB

CHANGE: RWY Physical Characteristics

PHYSICAL CHARACTERISTICS													
RWY	DIRECTION	THR COORDINATES	THR ELEVATION	TORA (m)	TODA (m)	ASDA (m)	LDA (m)	SWY (m)	CWY (m)	SLOPE	SURFACE	BEARING STRENGTH	CIRCUIT
17	154°(T)	27°38'13.03"S 022°59'34.03"E	3835'	2325	2553	2331	2325	6	228	0.0055U	ASPH	LCN 32	L
35	334°(T)	27°39'20.63"S 023°00'12.02"E	3876'	2325	2532	2331	2325	6	207	0.0055D			R